

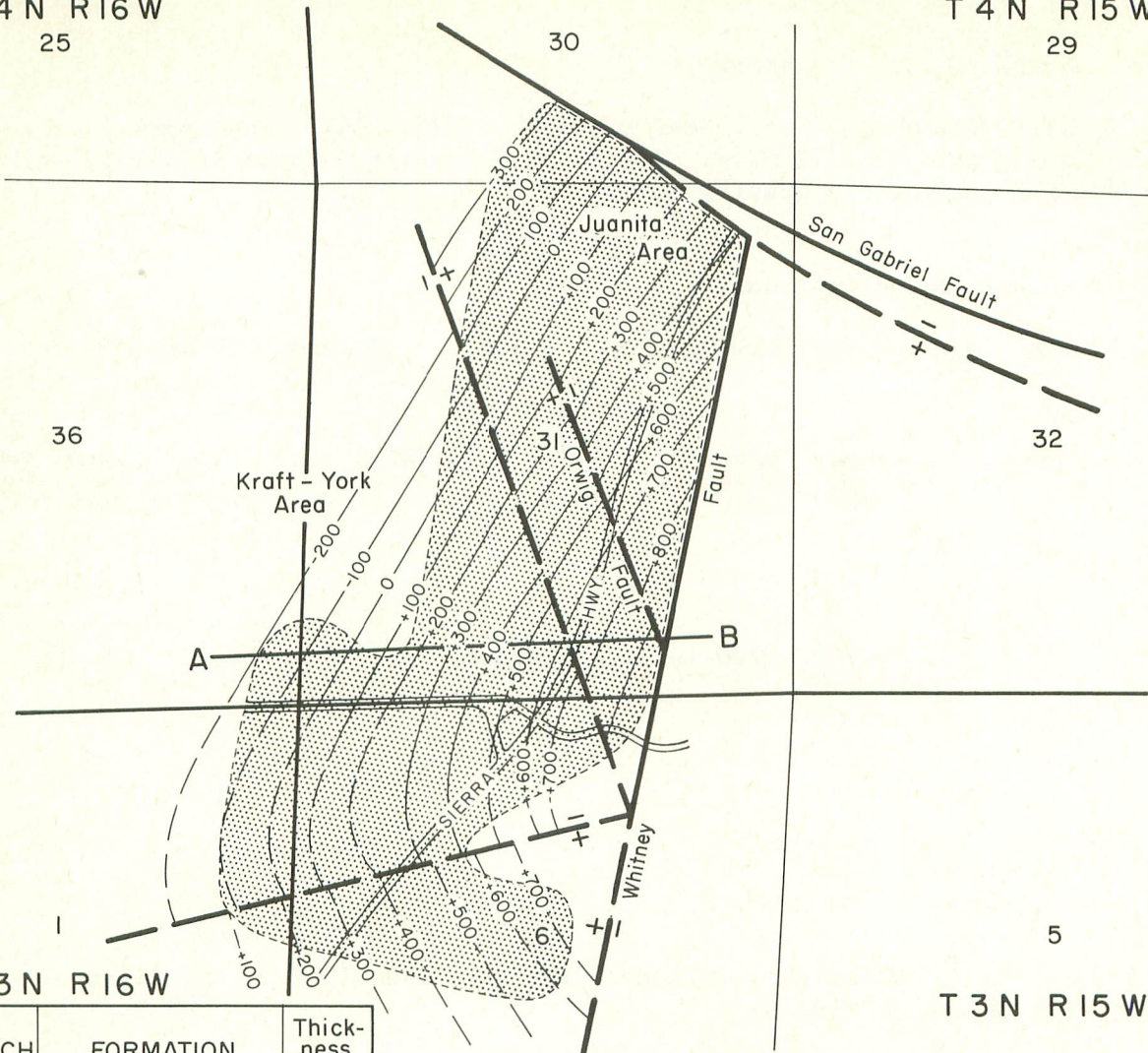
PLACERITA OIL FIELD

T 4 N R 16 W

25

T 4 N R 15 W

29



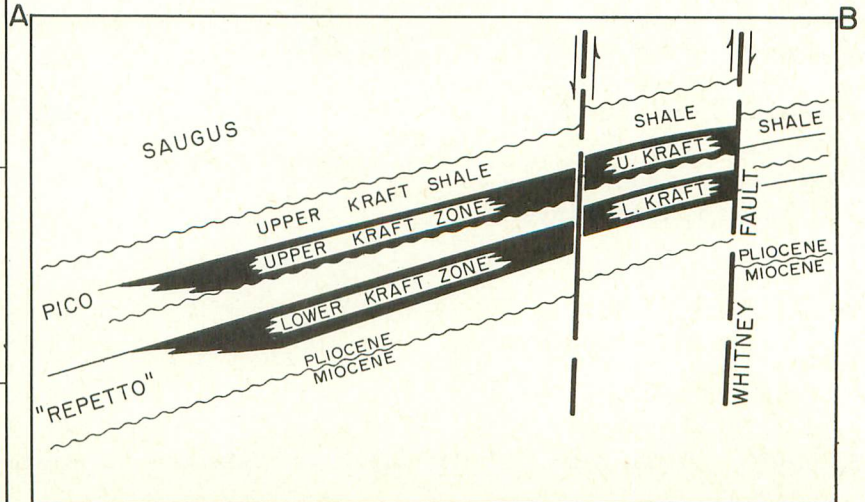
T 3 N R 16 W

T 3 N R 15 W

CONTOURS ON TOP OF LOWER KRAFT ZONE

PRODUCTIVE AREA

EPOCH	FORMATION	Thick-ness (Feet)
RECENT	Alluvium	100
PLEISTOCENE	Upper Terrace Deposits	200
	Lower Saugus	600
PLIOCENE	Upper Pico Upper Kraft	800
	Lower "Repetto" Lower Kraft	
MIOCENE	Upper Modelo	?



**CALIFORNIA DIVISION OF OIL AND GAS
FIELD DATA SHEET**

**PLACERITA OIL FIELD
Los Angeles County**

LOCATION 2 miles east of Newhall.

DISCOVERY DATA Nelson-Phillips Oil Co. (now Sunset International Petroleum Corp.)
well No. "Kraft" 1, Sec. 31, T. 4 N., R. 15 W., S.B.B.& M. Completed
April 20, 1948. I.P. 70 b/d 16.4-degree gravity oil.

STRUCTURE Faulted monocline.

ELEVATION 1,375-1,875 BASE OF FRESH WATERS 100-500 SPACING ACT APPLIES Yes

PRODUCING ZONES

Name of Zone or E. Log Marker	Average Depth (feet)	Average Thickness (feet)	Age	Geologic Formation	Gravity or B.t.u.	Salinity of Zone Water Gr./Gal.
Upper Kraft	800	200	U. Pliocene	Pico	11-17	100
Lower Kraft	1,700	400	L. Pliocene	"Repetto"	18-25	250

DEEPEST WELL DATA R. A. Provost Associates well No. "Protrana" 2, Sec. 25, T. 4 N.,
R. 16 W. T.D. 3,653 in Miocene.

PRODUCTION DATA—JANUARY 1, 1961

Cumulative Oil (bbl.)	31,767,384	Total Wells Drilled	515
Cumulative Gas (Mcf.)	5,798,287	Total Wells Completed	475
1960 Average Oil (b/d)	2,664	Producing Wells (1960 Aver.)	299
1960 Average Gas (Mcf/d)	150	Maximum Proved Acreage	715
Peak Production (1950) (bbl.)	5,785,256		

USUAL CASING PROGRAM

8-5/8" or 7" combination string cemented through
perforations above zone.

BOP EQUIPMENT Not required

MISCELLANEOUS A successful waterflood project for secondary recovery of oil is
being conducted in the central part of the field.

REFERENCES Calif. Div. of Oil and Gas "Summary of Operations" Vol. 35, No. 2 (1949)