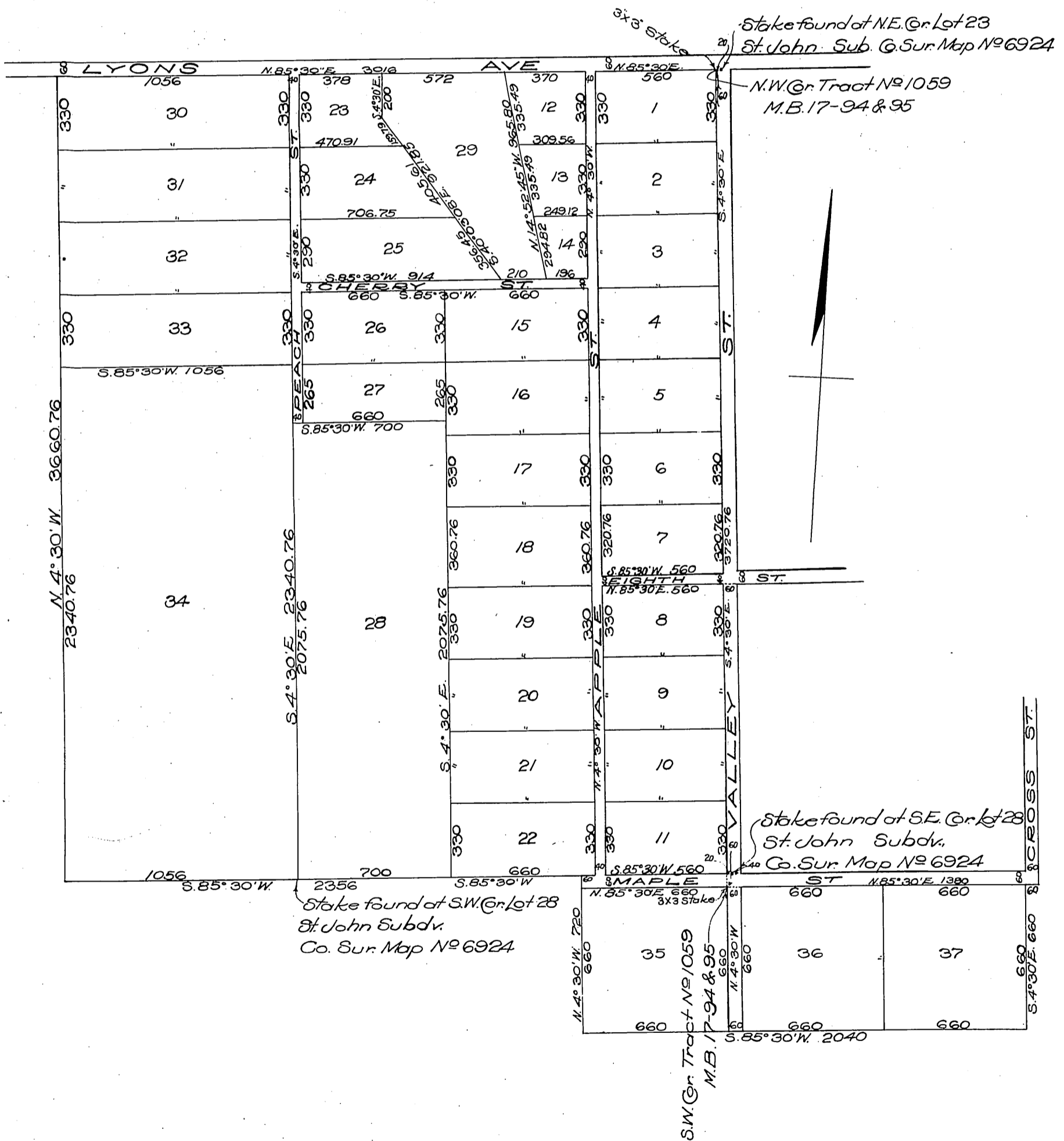


# TRACT NO. 1437



23

Being a subdivision of a part of Rancho San Francisco as recorded in Book 1, pages 521 & 522 of Patents, records of Los Angeles County, California, and shown on County Surveyor's Map No 6924, as Lots 22, 23, 28 and a part of Lots 21, 29, 30 and 31 of St. John Subdivision  
 Surveyed in September 1911,  
 by H.V. Wheeler, Civil & Mining Engineer  
 Scale: 200 feet to an inch.



Owner:- M.W. Atwood

Recorded Nov. 21 1911  
(Scale reduced to 1" = 500')